



Native Plant Garden in the centre of the city!



Wild flax

Check out your kitchen floor. Is it made of linoleum? Yes! Then it is partly made from pressed flax which becomes linseed oil.



Monarda / Wild Bergamot

Do you know someone that drinks Earl Grey tea? These leaves are used as flavouring in that tea!



Strawberry Blite

The outer part of the flower becomes fleshy and bright red, giving the cluster a strawberry-like appearance and the plant its name! The birds like to eat the seeds.



Bird bath

If you approach the garden quietly you might just see a bird taking a bath! The house finch male uses the bird bath regularly.



Heart leaved Alexander

The name of this plant comes from the heart-shaped leaves at the base of its stem.



Common Yarrow

The leaves look like and feel like feathers! Yarrow is commonly used in medicines for fever, the common cold, hay fever and stomach pains.



Showy Milkweed

How can milkweed be showy? This milkweed creates beautiful flowers that are a nectar source for bees and food sources for caterpillars. The feet or mouth parts of insects slip into the slits and pollen sticks to them when they fly away!



More hikes at natureregina.ca/get-outside-family-hikes

Share photos on the Nature Regina Facebook page!
Like these hike guides? Become a member!



Native Plant Garden in the centre of the city!



Giant Hyssop

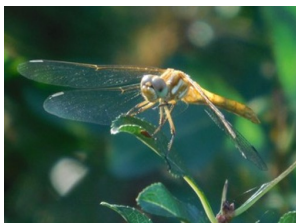
Bees and butterflies love to come for a drink of these nectar filled flowers! It takes hundreds of flower visits for the bees to stay healthy. *Please leave the flowers for the bees.*



Prickly Wild Rose

The wild rose protects itself with small bristles and prickles that cover the stem.

Since 1994 Nature Regina and the Royal Saskatchewan Museum have nurtured the Native Plant Garden, a colourful oasis of natural beauty, at the *south-east entrance of the museum at the corner of College Avenue and Albert Street*. A very special thanks to Gail Fennell for providing photos and organizing the volunteers of Nature Regina who work in the garden. Thanks to the many volunteers that spend hundreds of hours each year taking care of the garden!



Red-veined Meadowhawk

There are over 5,000 known species of dragonflies. The flight of a dragonfly is so unique that it has inspired engineers who are designing robots!



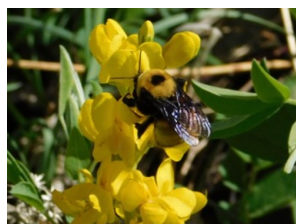
Native Harebell

The flowers have a bell shape and last a long time. They are an important sources of nectar for bees in the fall!



Alum root or coral bells

These native plants need very little water to survive and are called drought tolerant species. The flowers attract hummingbirds!



Buffalo bean

In the past, the blooming buffalo bean was a sign it was time for the buffalo hunt. Once the buffalo bean blooms it creates a seed pod. *These seed pods are poisonous.*



More hikes at natureregina.ca/get-outside-family-hikes

Share photos on the Nature Regina Facebook page!
Like these hike guides? Become a member!